

JANESVILLE

Wisconsin's Great Outside



Janesville's Official Visitor Guide



JANESVILLE

Wisconsin's Great Outside

Great Location

Highway access: Interstate 39/90 (4 exits)

State highways include: 51, 14, 11 & 26

Miles

Lake Geneva, WI	30	Green Bay, WI	150
Madison, WI	40	Door County, WI	200
Milwaukee, WI	70	Rockford, IL	40
House on the Rock	80	Chicago, IL	120
WI Dells, WI	90		



Airline Service

Dane County Regional Airport
 Rockford International Airport
 General Mitchell International Airport
 Chicago O'Hare International Airport

Table of Contents

WELCOME	PAGE 2
WISCONSIN'S GREAT OUTSIDE	PAGE 3
THINGS TO DO & SEE	PAGE 5
LOCAL FLAVOR	PAGE 9
ONGOING EVENTS/COMMUNITY	PAGE 10
DOWNTOWN	PAGE 11
ACCOMMODATIONS	PAGE 17
HISTORY	PAGE 25
LOCATION & MAP	PAGE 29

QUESTIONS? Let our expert staff at the Janesville Area Convention & Visitors Bureau assist you. We're here to answer your questions and help you plan your next visit, tour, reunion or special event.

Call (800) 487-2757 or visit our website at janesvillecvb.com.

JANESVILLE AREA

Convention & Visitors Bureau

20 S Main St, Ste 11, Janesville, WI 53545



©2018 Janesville Area Convention & Visitors Bureau

No part of this publication may be reprinted or otherwise reproduced without express written permission of the Janesville Area Convention & Visitors Bureau. Every effort is made to make this guide as accurate as possible. As information is subject to change without notice, we encourage readers to verify times, dates and other information listed in this publication.

Cover image: Art Infusion Chalk Art Event. Held in September annually. Pictured artists' Instagram feeds: Artbyce and Hanathemermaid. Photo courtesy of Nicodemus Nimmo.



Welcome to Janesville, Wisconsin's Great Outside. Recharge your spirit as you explore hundreds of acres of tranquil parkland and miles of peaceful trails. Take in the breathtaking beauty of our award-winning botanical garden and discover the charm of our 13 historic districts and quaint downtown.

Shop, dine, savor a craft beer or locally made wine and relax at one of our welcoming and affordable lodging options.

Sit back and immerse yourself in live theater, experience edge-of-your-seat excitement during a hockey home game or feel the exhilaration of a water-ski show team with some of the world's best skiers.

Whether you are visiting for business or pleasure, planning to stay a day or are considering relocating for a lifetime, we want you to enjoy all that our community has to offer and return often.



We invite you to experience all we have to offer.



Wisconsin's Great Outside

Rotary Botanical Gardens

No matter where you are in Janesville, Wisconsin's Great Outside, you're never more than minutes from scenic beauty and outstanding hiking, biking, rollerblading, cross-country skiing, water-skiing, disc golf, softball, soccer, sledding, tennis, boating and running opportunities. That's because the Janesville community is home to 64 improved parks and miles of peaceful trails.

Enjoy a leisurely stroll through a lush and lovely arboretum or botanical garden, or find a quiet spot for a relaxing picnic. Take in the scenic views of our parks, wooded areas, farmland or the river that runs through our quaint downtown. Grab the kids and head to one of our unique playgrounds or laugh and play at a beach, outdoor swimming pool or splash pad.

The parks we've listed below offer pavilions, picnic tables, bathrooms (open seasonally), and playground equipment. While all of our parks feature some play equipment, we've listed a few of our more unique playgrounds for you to explore. For more information regarding our parks system and recreational programs offered, please call Janesville's Parks and Recreation Division at (608) 755-3030.

Local Parks *

Riverside Park

- 87 Acres
- Biking and Nature Trails
- Boat Launch & Fishing
- Splash Pad
- Basketball, Tennis, Pickleball, Horseshoes, Sand Court Volleyball, Shuffleboard
- Cross Country Ski Trails
- Disc Golf Course

Palmer Park

- 164 Acres
- Biking and Nature Trails
- JACVB Visitor Information Center
- CAMDEN Accessible Playground
- Wading Pool
- Sand Court Volleyball, Tennis and Softball
- Pet Exercise Area
- Sledding

Lustig Park

- 32 Acres
- Wooded Nature Trail
- Disc Golf Course

Rockport Park

- 246 Acres
- Six Miles of Biking, Hiking & Cross Country Ski Trails
- Outdoor Olympic Swimming Pool & Wading Pool
- Peace Park Playground
- Historic Farmstead
- Soccer

Traxler Park

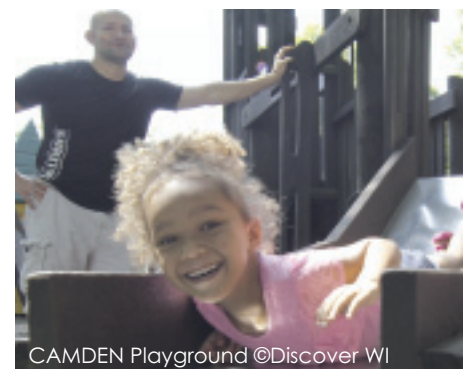
- 27 Acres
- Veterans Memorial Plaza
- Rock Aqua Jays Water Ski Show
- Boat Launch & Fishing
- Sand Court Volleyball

Bond Park

- 12 Acres
- Skate Park
- Basketball, Tennis, Soccer, Baseball & Softball

Lions Beach

- Spring-fed pond
- Boat Launch & Fishing
- Next to Rotary Botanical Gardens



CAMDEN Playground ©Discover WI

Accessible Playgrounds *

The award-winning CAMDEN Playground, located in Palmer Park, was the largest and most accessible playground in the world when it was built by volunteers in 1993. Its accessible/integrated playground continues to delight its users today. In 2016, the playground was updated and rebuilt.

The playground at Peace Park, located within Rockport Park, offers accessible playground equipment. The splash pad at Riverside Park is also accessible.

Hiking & Biking Trails *

Explore our miles of peaceful trails along the southern-most segment of the scenic Ice Age Trail, including the aptly-named Devil's Staircase. Whether you're hiking, biking or taking a leisurely stroll you'll discover a natural environment that recharges your spirit. Urban nature bonus: our trails connect many of our neighborhoods, including the downtown, to parks and attractions.

Wisconsin's Ice Age Trail The Devil's Staircase Segment

One of our most popular hiking trails is the Devil's Staircase. Located in Riverside Park, this scenic trail ascends the bluffs and offers outstanding views alongside the Rock River.

Year-round Fun

Janesville's trails offer opportunities for fun during all four seasons. In the winter, the trails, parks and greenbelt system are the ideal place to get out in the open air to enjoy cross-country skiing and snowshoeing.

Detailed trail maps are available at janesvillecvb.com or call (800) 487-2757.

Pools, Pads & Beaches *

Put the world on pause as you savor the simple pleasure of floating or splashing about on a Wisconsin summer day. Grab the family and head to Rockport Park to enjoy the Olympic-sized pool with diving well, wading pool, bathhouse with showers, and concession stand. Head to Riverside



Rockport Park ©Nicodemus Nimmo

Park's Splash Pad where kids can get wet, and parents can relax a little, knowing there's no deep water to worry about. The little ones can also enjoy the wading pool and concessions at Palmer Park. If a beach is what you're looking for, Lions Beach is open June through August, and features a sand beach and grass picnic area.

Golf *

You'll find 25 area golf courses within 45 minutes of Janesville.

Bass Creek

1303 S Murphy Rd
(608) 876-6631
golfbasscreek.com

- 9 holes, Par/Rating 36/34.9
- Yardage 3,218, Slope 114

Blackhawk

2100 Palmer Dr
(608) 757-3090
janesvilleblackhawk.com

- 9 holes, Par/Rating 34/33.3
- Yardage 2,857, Slope 113

Cecelia's

1901 S Emerald Grove Rd
(608) 754-8550
ceciliassgolf.com

- 9 holes, Par/Rating 36/32.7
- Yardage 3,071, Slope 113

Glen Erin

1417 W Airport Rd
(608) 741-1100
gleneringolf.com

- 18 holes, Par/Rating 71/72.4
- Yardage 6,849, Slope 126

Riverside

2100 Golf Course Rd
(608) 757-3080
janesvilleriverside.com

- 18 holes, Par/Rating 72/70.7
- Yardage 6,508, Slope 123

If you prefer to play with a Frisbee rather than golf clubs, we have two disc golf courses at Lustig Park and Riverside Park, (609) 755-3030. Try FootGolf at Blackhawk Golf Course!

Fishing *

Janesville offers several opportunities for leisurely fishing. To learn more visit janesvillecvb.com/resources to download our fishing brochure or call the Wisconsin Department of Natural Resources at (608) 743-4800.

Campgrounds *

Blackhawk	(866) 652-2586
Hickory Hills.....	(608) 884-6327
Jellystone Park.....	(877) 232-7386
Lakeland	(866) 860-5494
Lakeview	(608) 868-7800
Milton KOA	(800) 469-5515

Year-round fun in Janesville, Wisconsin's Great Outside!



Things To Do & See

Nature

Rotary Botanical Gardens

1455 Palmer Dr
(608) 752-3885
rotarybotanicalgardens.org

Discover the beauty of the award-winning Rotary Botanical Gardens featuring 20 awe-inspiring acres and a family-friendly atmosphere. Awaken your senses as you take in the dramatic and internationally-themed gardens, including Japanese, Scottish, French Formal, Italian and English Cottage gardens. The gardens include over 20 different garden styles and 4,000 varieties of plants. Visitors to the Gardens may also enjoy guided garden tours, shopping local artisans' work in the Cottage Garden Gallery Gift Shop, and a variety of educational classes and programs available for adults, youth and families.

Ice Age Trail

rock.iceagetrail.org

Over 12,000 years ago, an immense flow of glacial ice sculpted a landscape of remarkable beauty across Wisconsin.

Explore the Janesville to Milton segment of this scenic and lovely trail. Follow the trail over a converted railway bed under a canopy of trees while taking in the great

views on this segment. The Ice Age Trail also incorporates two paved recreational trails along a stream that was once a large glacier melt-water river. Wander through the Devil's Staircase segment of the trail, which climbs up a steep stone staircase and travels on the side of a scenic bluff, along a natural shelf overlooking the beautiful Rock River. Natural beauty abounds here!

Robert O Cook Memorial Arboretum

3550 W Co Hwy A

Hike, cross-country ski or snowshoe the trails that wind their way through 160 scenic acres of native forest and wetland. You can find many species of native trees, plants, birds and other wildlife here, and many of the trails include interpretive markers.



Ice Age Trail

Sports & Entertainment

Rock Aqua Jays Water Ski Show Team

Rock Aqua Jays Stadium-Traxler Park
600 N Main St
rockaquajays.com

Be ready for edge-of-your-seat family-friendly action as you're entertained by some of the world's greatest skiers! With the beautiful Rock River as their backdrop, these talented national-champion performers display their pyramid, ballet, jumping and barefoot water skiing skills. The show features performers of all ages and skill levels. Admission is free, but donations are encouraged. You can even buy souvenir T-shirts and concessions to enjoy during the show.

Showtimes: Wednesday and Sunday evenings, Memorial Day weekend though Labor Day weekend.

The Rock Aqua Jays often host the National and World Water Ski Show Tournaments.

Janesville Jets Hockey Janesville Ice Arena

821 Beloit Ave
(608) 756-2383
janesvillejets.com

The Janesville Jets are taking fun family entertainment to an all new high with

Nature, entertainment, history & tours, arts & culture.

exciting action-packed home games! Games also include fun promotions and themes, giveaways, contests, and more. The Janesville Jets Hockey Team are a Junior A Team that plays in the North American Hockey League. The playing season runs from September through April. Home games are at the Janesville Ice Arena. Concessions are available.

Rock County 4-H Fair

1301 Craig Ave
(608) 755-1470
rockcounty4hfair.com

Tradition abounds at the oldest 4-H fair in the U.S., from the numerous animals that compete every year, to the carnival and every unique exhibit in between. The fair is constantly evolving, showcasing amazing entertainment including top country acts and a variety of activities for the whole family.

watch them create. After the tour, you can purchase or special order a wagon or toy of your own. Tours are given by appointment only and last approximately one hour.

Rock County Historical Society Campus

426 N Jackson St
(608) 756-4509
rchs.us

The Rock County Historical Society is a resource for one-of-a-kind historic tours and sites, and for historical research and thought-provoking programming. At its center is the Lincoln-Tallman House, a lovely Italianate-style mansion that was constructed in 1857 and occupied by William Morrison Tallman, a lawyer and abolitionist. Abraham Lincoln visited in October of 1859 prior to his election in 1860. Guests can have the opportunity to

Lincoln-Tallman House



to the Charles Tallman Archives, Tallman Carriage House, Wilson King Stone House and Frances Willard Schoolhouse.

MacFarlane Pheasants, Inc.

821 South US Hwy 51
(608) 757-7881 or (800) 345-8348
pheasant.com

Janesville's MacFarlane Pheasants has been in the game bird business since 1929, and it is the largest pheasant producer in North America. Call ahead to set up your personal tour of the farm, and also be sure to check out their unique shop for pheasant, specialty meats and other food, as well as cookbooks and other gifts.

Historic Walking Tours

For a lesson in history and architecture all you need to do is walk down our city streets. Janesville features 13 historic districts, many of which make perfect walking tours.

Guided

Join the Rock County Historical Society and a local historian for Janesville Historic Walking Tours. Each tour is designed to showcase the unique personality and stories from Janesville's distinct neighborhoods and downtown. Enjoy a 60-minute guided tour, learning about the people, places and heritage of each neighborhood. Visit janesvillecvb.com for a schedule of seasonal guided tours.

Self-Guided

Rock County Historical Society has programmed Janesville historic sites onto the Clio app, allowing you to walk or drive around Janesville and discover history for yourself. Right now there are more than 80 historical sites on the app within 5 miles of downtown Janesville. Download the app for Android or iOS.



Janesville Jets ©Gametime Sports Photos

History & Tours

Wisconsin Wagon Company

507 Laurel Ave
(608) 754-0026
wisconsinwagon.com

Showroom and Office: 300 N River St

Only in Janesville can you tour the manufacturer of the hand-crafted Janesville Coaster Wagons and other solid wooden toys patterned after historic products of the first half of the 20th century. The tour will draw you into their toy making gallery and delight all who

enjoy a variety of themed tours of the home.

If you are looking for a way to complete your historical adventure or to add a little culture to your day, visit the Helen Jeffris Wood Museum Center. The center offers a small gift shop and exhibit galleries that feature Pauline Pottery and Pickard China, as well as rotating exhibits celebrating the history and heritage of Rock County. The Rock County Historical Society also hosts a series of interactive, educational and entertaining events.

The Historical Society campus is home

Public Art

Create your own self-guided public art tour! Janesville is home to nearly 40 unique outdoor public art pieces. Many are located in our downtown. Visit janesvillecvb.com to learn more and find their locations.

Gray Brewing Company

2424 W Court St
(608) 752-3552
graybrewing.com

Founded in 1856, Gray Brewing Company is one of the nation's oldest family-owned beverage companies, currently managed by the great-great-grandson of the founder. They offer a flavorful line of beers, root beer and sodas. Tour the brewery and visit the tasting room to enjoy a beverage. Visit janesvillecvb.com for scheduled dates and times.

Barn Quilts of Rock County

rockwibarnquilts.wixsite.com/barnquilts

Rock County, Wisconsin is home to over 200 barn quilts scattered throughout the charming countryside. These unique pieces of folk art are made from wood and painted to look like a quilt block, then mounted on a barn or other building. Blocks range in size from small 2 foot squares on garages to large 8 foot blocks on barns. Take a relaxing self-guided driving tour to take in the scenic

countryside and these unique pieces of folk art. Contact the Janesville Area Convention & Visitors Bureau for a map of barn quilt locations throughout the county.

Markets

Janesville Farmers Market

(608) 289-9292
janesvillefarmersmarket.com

Held outdoors in Janesville's historic and charming downtown. This completely local market features fresh produce, meat, cheese, baked goods, honey, soaps, arts and crafts. Most Saturdays also offer live music.

The event runs on Saturdays, May through October, 8 AM to 1 PM. Markets are also held monthly throughout the winter.

Skelly's Farm Market

2713 S Hayner Rd
(608) 757-1200
skellysfarmmarket.com

Discover Skelly's, where you'll find top quality produce and fun for the whole family! Skelly's Farm Market features delicious seasonal produce from strawberries to sweet corn to pumpkins. Shop the variety of unique items in their quaint gift shop or indulge in a freshly made donut, pie or caramel apple. Head outside to explore family activities including wagon

rides, a unique interactive playground, and corn mazes. Open June through October.

Rock County Farmers Market

5013 Hwy 11 West
(608) 449-4900
rockcountyfarmersmarket.com

This open-air market features fresh produce, baked goods, crafts and more. Sundays, 8 AM-1 PM, mid-May through October.

Arts & Culture

Janesville Performing Arts Center

408 S Main St
(608) 758-0297
janesvillepac.org

Well known for its acoustics, the theatre is a comfortable space to sit back, relax and enjoy a wide variety of performances including plays, musical theatre, dance, music, and a visual arts gallery. The center is also home to The Gallery, a small 100-seat performance space, which hosts intimate theatrical performances. The Janesville Performing Arts Center serves as the primary arts and cultural center for the greater Janesville area by providing a home venue for local arts groups. The theatre is housed in the original Janesville High School, which opened in 1923 and was renovated into a 633 seat theatre in 2004.





Janesville Performing Arts Center

Janesville Art League & Gallery Janesville Woman's Club

108 S Jackson St
(608) 754-4544
janesvillewomansclub.com

The Art League's art collection is housed in the gallery on the second floor of the Woman's Club building, constructed in 1928 and home to several clubs dedicated to art and history. The building is available for special events. A rotating display of members' art work is also featured at the Janesville Performing Arts Center and Marling Home Works. The Janesville Art League exists to further community interest in arts, develop appreciation and recognition of artists, and to view, study, display, collect and conserve art works. It is open to anyone with a desire to support the arts, and have art enhance their lives.

Hedberg Public Library

316 S Main St
(608) 758-6600
hedbergpubliclibrary.org

This award-winning facility is located in the heart of Janesville. In addition to traditional library services, Hedberg Public Library also features changing exhibits, a gift shop, coffee shop, Storybook Garden, and educational programs.

The Armory (Best Events)

10 S High St
(608) 741-7400
janesvillearmory.com

Built in 1930, used during World War II by the 192nd Tank Battalion, and listed on the

National Register of Historic Places, the Armory is an exciting entertainment venue and event facility. It seats up to 250 and is home to special shows and events.

Glass Garden

25 W Milwaukee St
(608) 754-3718
eglassgarden.com

Glass Garden teaches glass art classes and stocks a large selection of products. They can create custom designs and construction in stained glass, etching and carving. They also offer a large array of finished glass art, including stained glass panels, jewelry, and other unique gifts.



Freedom Fest

This popular event hosted by New Life Assembly of God includes activities and attractions, unique food, exciting carnival rides, an incredible fireworks display and musical performances by several popular Christian music artists. The highlight of the event is the compassion and community services. Held annually in early July.

Voigt Music Center

34 S Main St
(608) 756-0081
voigtmusic.com

Located in a beautiful historical building, Voigt is dedicated to learning, making and performing music for all ages and skill levels. Their full stage hosts open jams, clinics and other events.

Raven's Wish Gallery

101 W Milwaukee St
(608) 757-2622
ravenswish@sbcglobal.net

Raven's Wish Gallery, located in historic downtown Janesville, is an eclectic showcase for the creations of more than 70 local and national painters, jewelers, photographers, and wood, glass, textile, and mixed media artists. The gallery hosts artist exhibitions, unique events, and classes year-round.

Live Music

Regardless of your musical tastes, you can find a diverse selection of opportunities to enjoy live music in Janesville throughout the year, including family-friendly outdoor concerts held in one of our beautiful parks or botanical garden, exciting top name performers on the stage at our Performing Arts Center and local and regional musicians at various venues throughout the city.

Visit janesvillecvb.com to learn more.



Local Flavor

Food & Drink

If you're looking for food and drink that is uniquely local, Janesville offers a variety of options including one of Janesville's newest restaurants, **Lark**, whose focus is on seasonally inspired dishes and drinks sourced with local ingredients. Check out our full restaurant guide featuring more than 100 options for dining in the Janesville area. Visit janesvillecvb.com/about/resources.

Every Saturday from May through October, shop local at the **Janesville Farmers Market** where you'll find fresh produce, meats, eggs, honey, baked goods, plants, soaps, hand cream, herbs, jewelry, and much more, all produced locally.

A "must visit" while in Janesville is America's largest pheasant farm, **MacFarlane Pheasants, Inc.** Shop their unique store for pheasant, specialty meats and other food, as well as cookbooks and other gifts. Call ahead to set up your personal tour of the farm.

Basic's Cooperative is a great place to find high quality natural and organic foods, supplements and lifestyle aids. They give preference to products that are grown or produced locally or regionally.

If you love craft beer, check out **Gray Brewing**. Founded in 1856, Gray Brewing is proud to be one of the nation's oldest family-owned brewing companies, offering a flavorful line of beer, root beer, and soda in their tasting room. Also visit **Rock County Brewing Company**, featuring an ever changing line-up of handcrafted beer in downtown Janesville's historic Carriage Works building.

If it's wine that you love, plan to head to **Fermenting Cellars** located in a log cabin in Janesville's scenic countryside. They offer a variety of dry and sweet, red and white, a dessert coffee wine and a single run fortified wine. Enjoy wine and chocolate pairings in nearby Milton, WI at **Northleaf Winery** and check out **Timber Hill Winery** also in Milton.



Gray Brewing©Eric Panico



Northleaf Winery

Ongoing Events

Spring Wildflower Walk

Held each year in May, this event is a chance to observe truly spectacular flower displays along the scenic Devil's Staircase trail (a part of the Ice Age Trail) that runs through Janesville's Riverside Park.

Janesville Morning Rotary Pie Ride

Held in June, this fun annual bicycling event features 20k, 50k, 100k and 100 mile routes through scenic Southern Wisconsin.

Tallman Arts Festival

Held in early August, this art festival showcases the work of more than 70 regional artists, with live music, great food and lots of family-friendly activities.

Rock River Wine Walk

Taste different wines as you shop and dine your way through downtown Janesville! Held in the spring and fall each year.

Skelly's Corn Maze

Get lost in over 15 acres of family fun from September through October. Each year Skelly's creates two new mazes that challenge you to weave your way through to the end.

Rock River Thresheree

This annual living history festival features working antique steam engines and equipment demonstrations. Held Labor Day weekend.

Art Infusion

Sidewalk chalk artists and spectators line the sidewalks along the scenic riverwalk in downtown Janesville with a colorful variety of hand drawn murals. Held in September.

Holiday Light Show

Walk through a magical wintry wonderland filled with nearly a half-million twinkling lights at Rotary Botanical Gardens. Held various dates in late November and December.

Holiday Tours of the Historic Lincoln-Tallman House

Victorian decorations and exhibits illustrate the customs of the period between 1857 and 1915 in this fabulous tour of the Lincoln-Tallman House. Held in November and December.

To learn more about these events or the thousands of others held each year in Janesville, Wisconsin's Great Outside, visit our calendar of events at janesvillecvb.com.



Holiday Light Show © Tom Rife Photography

Community

The Janesville Gazette is the local daily newspaper. Janesville has two local radio stations: WCLO-AM and WJVL-FM. (608) 754-3311 or gazettextra.com.

Health Care Providers: Mercyhealth and SSM Health-Dean Medical Group. We have two hospitals, Mercyhealth and SSM Health-St. Mary's Hospital. In case of an emergency, dial 911 for immediate response.

Janesville's numerous parks and recreation facilities offer programs, events and opportunities to play for all ages. (608) 755-3030.

For more organized sport leagues, contact the YMCA of Northern Rock County at (608) 754-9622 or the Boys and Girls Club of Janesville at (608) 755-0575.

The Top Employers lead the way employing over 1,000 workers each: Mercyhealth System and Rock County.

Hedberg Public Library is an award-winning facility located in the heart of Janesville. In addition to traditional library services, Hedberg Public Library also features changing exhibits, a gift shop, coffee shop and educational programs. (608) 758-6600.

Business Relocation Information can be obtained by contacting Forward Janesville, Inc. at (608) 757-3160 or forwardjanesville.com.

Janesville has over 50 **places of worship**. Visit janesvillecvb.com/about/resources to view our Places of Worship Directory.



Downtown

Dining, Shopping, Entertainment, Classes ✦

Whether you're in search of unique shopping, live entertainment, fun events, exceptional dining or craft brewed beer, Janesville's quaint downtown is a great place to visit.

Enjoy the scenic view of the river and downtown from the patio of the **Bodacious Shops of Block 42** as you sip espresso or a glass of wine and savor a homemade cupcake, or splurge on deep fried Wisconsin cheese curds and a hearty burger at a local pub like the **Looking Glass**, **O'Riley & Conway's Irish Pub**, **Riley's Sports Bar & Grill** or **Whiskey Ranch**. On various dates you may also enjoy live music at many of these downtown establishments.

If you're looking to try a new dish or relax with a specialty cocktail, visit **Lark**, which offers a stylish, comfortable and casual

setting with creative food and drinks. They also host a variety of special dining events and mixology classes.

All in all, Janesville's downtown includes nearly two dozen eateries that offer a wide variety of dining options. Learn more about dining in Janesville's downtown when you visit janesvillevb.com.

After dining grab a brew.

Located in downtown Janesville's historic Carriage Works building, **Rock County Brewing Company** is a nano brewery offering hand-crafted beers made in small batches. Not only can you enjoy a selection of tasty brews when you visit but frequently they partner with local food trucks to offer a variety of unique dining options.



Now it's time to shop and learn!

Vintage or new, the choice is yours. Janesville's downtown is home to a variety of unique shops, with more than 30 retailers.

You may go home with a work of art, a piece of vintage jewelry, a specialty olive oil, or even a new guitar. If you love resale be sure to visit **Carousel Consignments** with 4000 square feet packed full of antiques, collectibles, and housewares. Maybe you'd rather shop the wares of more than 70 local artisans at **Raven's Wish Gallery**. You'll find everything from handmade soaps and jewelry to fine art and everything in between. Also, be sure to check out **Angie's on Main**, an upscale resale/retail store featuring items ranging from custom signs to fine clothing, accessories and more, and **Home Again Consignments** offers high-end home furnishings from candlesticks to couches.



Bodacious Olive ©Eric Panico

Glass Garden ©Glass Garden



Just down the street visit **The Glass Garden** where you can learn to create your own stained glass masterpiece or browse their selection of stained glass items including jewelry and gifts. Then head over to the **Bodacious Olive** to taste and shop their delicious selection of extra virgin olive oils, flavored and fused gourmet oils, and balsamic vinegars in traditional aged and infused varieties.

Ladies be sure to check out **Velvet & Tulle** to explore their collection of contemporary casual women's clothing and accessories.

Don't leave downtown until you've visited **Voigt Music Center** where you will be blown away by the variety of guitars, drums, amps, keyboards, sheet music and more. Not only can you purchase a musical instrument you can also take lessons, and they have a full stage where they offer an array of events including open jams and live music.

To make the most of your retail experience while in Janesville visit the shopping section of our website at janesvillecvb.com.



Voigt Music Center ©Voigt Music Center



BODACIOUS SHOPS OF BLOCK 42



Something is always happening at The Shops

Bodacious Shops of Block 42 are housed in a completely renovated building on Main Street in downtown Janesville. You've never seen Janesville from this view! It is the perfect home to a trio of interconnected shops!

Enjoy indoor and outdoor seating, including a fire pit and beautiful view of the Rock River.

Follow us at Bodacious Shops of Block 42 for upcoming events. Or, better yet, just make The Bodacious Shops of Block 42 your next destination. Private meeting and event space available.

THURSDAY NIGHT HAPPY HOURS, FRIDAY NIGHT LIVE MUSIC, SATURDAY FAMILY FUN AFTERNOONS.

119 N Main Street, Downtown Janesville • 608-563-5566



www.facebook.com/Block42Janesville/

Art Infusion

IN DOWNTOWN JANESVILLE

Sidewalk Chalk Art For Fun Or Competition



JANESVILLE
Wisconsin's Great Outside

janesvillecvb.com or (800) 487-2757



NO
EXPERIENCE
NECESSARY!



ONLINE
GIFT
CERTIFICATES
AVAILABLE!

Beginning Stained Glass Classes

1 Day Fusing Classes

Private Parties

Girlfriends' Night Out

Finished Panels, Platters & Jewelry for Sale

25 West Milwaukee Street, Janesville

608-754-3718 • eglassgarden.com



VOTED
JANESVILLE #1
BREAKFAST
RESTAURANT

Serving Breakfast & Lunch
7 Days a Week • 6am to 3pm

208 S. Main St. • Janesville, WI • 608-754-9006

www.CitrusCafe208.com



O'riley & Conway's

54 BEERS ON TAP
OVER 100 DIFFERENT BEERS TOTAL!

OFFERING A FANTASTIC MENU FEATURING:

Traditional Irish Fare • Belt Busting Burgers
The Freshest Wild Caught Seafood • Sandwiches
AND a Great Irish Breakfast!

214 W Milwaukee St Janesville, WI 53548

HOURS: Monday – Sunday 11:00 am – 2:00 am

(608) 752-6099

www.orileyconwaysirishpub.com



LOCAL CRAFT BEER

IN HISTORIC DOWNTOWN JANESVILLE



10 N. PARKER DRIVE, SUITE 160
JANESVILLE, WI
WWW.ROCKCOUNTY.BEER



TAPROOM HOURS:
THURSDAY 4 PM – 9 PM
FRIDAY 4 PM – 10 PM
SATURDAY 11 AM – 10 PM
SUNDAY 12 PM – 6 PM

CAROUSEL CONSIGNMENTS

Antiques • Collectibles • Housewares


Monday- Friday 9:00am to 5:30pm

Saturday 9:00am to 5:00pm

VOTED #1 ANTIQUE STORE

31 S. Main St. • Janesville, WI

608-758-0553

**Raven's
WISH**
Gallery / Studio

Historic Downtown Janesville • 101 W. Milwaukee St.
608.757.2622. • ravenswish@charter.net
www.ravenswish.com

Wisconsin Wagon Company

**Handcrafted wooden wagons,
wheelbarrows, gifts and toys.**

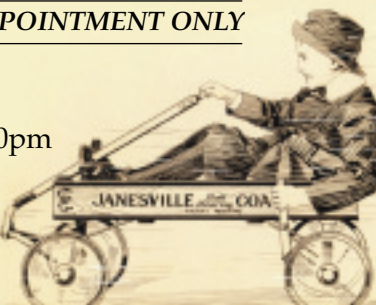
TOURS BY APPOINTMENT ONLY

Showroom Open

Mon-Fri: 8:30am - 4:30pm

300 N. River Street
Janesville, Wisconsin

608-754-0026



www.wisconsinwagon.com




Velvet & Tulle
BOUTIQUE

*A fashion savvy women's clothing boutique in
Historic Downtown Janesville!*

217 W. Milwaukee St. • Janesville, WI 53548 • (608) 208-2055
www.velvetandtulle.com



**HOME AGAIN
CONSIGNMENTS
& HOME
FURNISHINGS**

Tuesday - Sunday
11am to 5pm

608.314.0404

215 W. Milwaukee St.
Janesville, WI 53548



Angie's
On Main

HOME DECOR • FURNITURE • CUSTOM T-SHIRTS • JEWELRY
ANTIQUES • HANDMADE ITEMS • CUSTOMIZED GIFTS

Over 12,000 Sq Feet of Fabulous Finds and 200+ Dealers

37 S MAIN STREET • JANESVILLE, WI 53545
angiesonmain@gmail.com
608-743-9255



CAUTION: TALLMAN TOURS CONTAIN FUN!

**TRADITIONAL TOURS • HELP WANTED TOURS
HOLIDAY TOURS**

**IT ALL STARTS IN
JANESVILLE:
Now with NEW
Evening Hours**

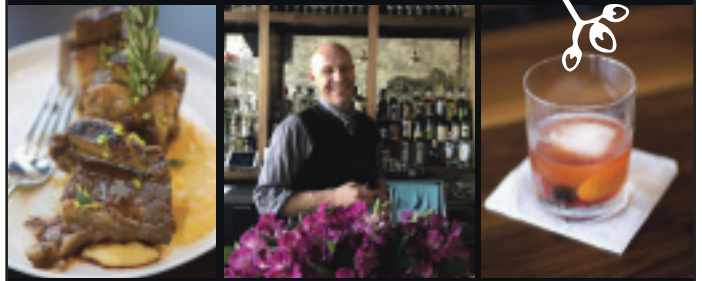
For More Information Visit:
www.rchs.us or Call 608-756-4509



**ROCK COUNTY
HISTORICAL SOCIETY**
WHERE PAST MEETS PRESENT
426 N. Jackson Street
Janesville, WI 53548
608-756-4509
www.rchs.us

Lark

Seasonally inspired dining and drinks



At Lark, our focus is on seasonally driven dishes made with locally sourced ingredients that reflect the wide influences that drive American cuisine.

Lark's bar features classic and original craft cocktails made with fresh ingredients and artisan spirits.

EAT DRINK VISIT

60 S Main St. | Janesville, WI 53545 | (608) 563-1801

larkjanesville.com

Since 1856

GRAY BREWING CO.

JANESVILLE, WISCONSIN



**Monthly
Brewery Tour**
The 2nd Saturday of
the month at 3:00PM.

**Tasting Room
Hours**

Friday: 4:30-9:00pm
Saturday: 2:00-7:00pm



2424 W. Court St. Janesville, WI 53548

608-752-3552

www.graybrewing.com

BIG THINGS ARE HAPPENING IN DOWNTOWN JANESVILLE

Janesville is a city on the rise. An iconic, multi-faceted downtown revival begins in the core of the community where the new Town Square embraces both sides of the riverfront. This is just the beginning of a host of public improvements and redevelopment plans that are drawing new residents, businesses and also quickening the pulse in the heart of our community, Janesville's downtown.

THE TIME IS NOW TO GET INVOLVED.

ARISE NOW

A DOWNTOWN JANESVILLE PUBLIC PRIVATE PARTNERSHIP



Are you **IN?**

JANESVILLEARISE.COM



Accommodations

Hotels, Motels, Bed & Breakfasts

Janesville offers a variety of hotels and bed & breakfasts to make your stay relaxing and memorable.

No matter what time of the day or night you arrive, you can rest assured that we'll have a room awaiting you. If you're all about business, we can accommodate that too!

Our accommodations offer a variety of premium services and amenities, including guest rooms with ample work space, a full complement of business services, quality fitness facilities and comprehensive meeting capabilities. Our hotels exceed guest expectations by providing the right room, the right technology and the right service to make every stay relaxing and filled with positive interactions.

For more information about these accommodations, visit janesvillecvb.com or contact the Janesville Area Convention & Visitors Bureau toll-free at (800) 487-2757.

Americinn

3900 Milton Ave
(608) 756-4511 or (800) 854-9517
americinn.com

- Free Wi-Fi
- Indoor pool & hot tub
- Fireplace and whirlpool suites
- Fitness center
- Business center
- Arcade
- *Microwave/Fridge (*select rooms only)
- Complimentary breakfast buffet
- Meeting rooms: facilities for up to 275
- Coin operated guest laundry facility
- Children under 18 free with parents
- Free Bus/Truck Parking

Baymont Inn

616 Midland Rd
(608) 758-4545 or (800) 337-0550
baymontinns.com

- Indoor pool and whirlpool
- 24-hour fitness center
- Restaurant nearby
- Complimentary continental breakfast
- Children under 18 free with parents

- Pets allowed/fee
- Free high speed wireless internet
- 105 rooms, including 8 suites
- Free local phone call
- ATM
- Guest laundry facilities available
- Meeting facilities for up to 25 people
- Rooms include refrigerator & microwave
- Bus and truck parking
- Business Center

Cobblestone Hotel & Suites

Opening Spring 2019!

20 W Milwaukee St
(888) 693-8262
staycobblestone.com

- Suites available
- Complimentary hot breakfast
- Fitness center
- Pool
- Free Wi-Fi
- On site laundry
- Pet friendly

Hampton Inn

2400 Fulton St

(608) 754-4900 or (800) HAMPTON
hamptoninn.com

- Indoor pool & whirlpool
- Fitness center
- Restaurant next door
- Free hot breakfast
- Children under 18 free with parents
- Free high speed wireless internet access
- 98 rooms, including 8 suites
- Free local phone calls
- In-room coffee
- 24-hour coffee service
- Dry cleaning and laundry service available
- Can accommodate accessibility needs
- Business Center
- Bus parking

Holiday Inn Express

3100 Wellington Pl

(608) 756-3100 or (800) 315-2621
hiejaneseville.com

- Indoor pool and whirlpool
- Exercise room
- Restaurants nearby
- Complimentary Express Start hot breakfast
- Children under 18 free with parents
- Free high speed wireless internet
- 142 rooms, including 5 suites
- 24-hour coffee service
- Free HBO
- Rooms include refrigerator & microwave
- Coin operated laundry service
- Iron and ironing board in every room
- Meeting facilities for up to 750 people

Microtel Inn

3121 Wellington Pl

(608) 752-3121 or (888) 771-7171
microtelinn.com

- Restaurant nearby
- Free continental breakfast
- Children 17 and under free with parents
- Pets allowed/ fee
- Free high speed wireless internet/ guest computer
- 24-hour coffee service
- 61 rooms
- Free local/long distance phone calls
- Flat screen TV's
- Refrigerators in some rooms
- Hair dryer, iron, ironing board
- Guest laundry
- Fax and copy service available
- Bus and truck parking

Motel 6

3907 Milton Ave

(608) 756-1742 or (800) 466-8356
motel6.com

- Restaurant next door
- Kids stay free (under 17 years old)
- Pets allowed/free
- Free wireless internet
- 119 rooms
- Free local phone calls
- Complimentary coffee from 6 to 10 am
- Free expanded cable television
- Refrigerator & microwave in some rooms
- Guest laundry

Northern Town Motel

1409 Center Ave

(608) 754-0248

- Restaurants nearby
- Free wireless internet
- 13 rooms
- Free cable television

Quality Inn

3520 Milton Ave

(608) 754-0251 or (800) 4-CHOICE
qualityinn.com

- Restaurant nearby
- Free deluxe continental breakfast
- Pets allowed/fee
- Free wireless internet access
- 58 rooms
- All rooms have refrigerators, coffee makers & microwaves
- Guest laundry
- All single rooms have king beds
- Bus and truck parking

Super 8

3430 Milton Ave

(608) 756-2040 or (800) 800-8000
super8.com

- Restaurant nearby
- Super Start breakfast
- Children under 17 free with parents
- 46 rooms
- Coin operated washer and dryer
- All rooms have microwave, refrigerator, coffee maker, iron, ironing board and hair dryer
- Free wireless internet
- Can accommodate accessibility needs
- Crib/roll aways available upon request
- Bus/truck parking w/ plug-ins

TownePlace Suites by Marriott*Opening Spring 2019!*

2706 Pontiac Pl

(608) 898-4200 or (888) 236-2427
towneplacesuites.marriott.com

- 87 suites with full kitchens
- Fully stocked kitchens with plates, pans etc.
- Complimentary hot breakfast
- Business center
- Fitness center
- Pool
- Free Wi-Fi
- On site laundry
- "Container Store" closets
- Outdoor grills
- "In a Pinch Market"
- Pet friendly
- Longer stay rates available
- Restaurants nearby
- Marriott Rewards points

BED & BREAKFASTS**Guardian Angel**

429 Prospect Ave

(608) 758-3211

guardianangelbnb.com

- Private rooms with private baths
- Furnished apartment available for short or long term rentals
- Daily breakfast special
- Cable television & video library
- Convenient to many local attractions
- High speed wireless internet
- Nationally-registered historic home
- Victorian home, antique furnishings
- Putting green
- Apartment for 4 to 6 guests

Scarlett House

825 E Court St

(608) 754-8000

- Full breakfast
- Established in 1999
- Whirlpool tub
- Turn-of-the-century Queen Anne
- Nationally-registered historic home
- Historic Court House Hill location
- Antique furnishings
- Wrap-around porch
- Near parks and downtown shopping




JANESVILLE CONFERENCE CENTER

meet you there!

The Janesville Conference Center provides over 15,000 square feet of combined meeting, exhibit, event, and banquet space. With the use of soundproof movable partitions this space can be easily converted into smaller spaces to accommodate group meeting rooms, breakout sessions, and meal functions.

OTHER FEATURES INCLUDE...

- Conference space all located on the first floor, completely handicap accessible, and connected to the Holiday Inn Express
- Completely equipped with audio visual capabilities
- Capacity for up to 800 people
- Complete breakfast, lunch and dinner service through our catering partner
- 100% smoke free



CONVENIENTLY CONNECTED TO THE



3100 Wellington Place
Janesville, WI 53546

608-741-1930

www.janesvilleconferencecenter.com



Discover hometown hospitality!

CLOSE TO MANY POPULAR JANESVILLE ATTRACTIONS

Just off I-90, our hotel offers a warm welcome within minutes of central Janesville—a charming city known throughout the state as ‘Wisconsin’s Park Place.’ Situated within an hour of both Madison, WI and Rockford, IL, this hotel makes a great base for southern WI and beyond. Whether you’re in town to meet with Janesville businesses or tour the beautiful Rotary Botanical Gardens, the Hampton Inn Janesville offers the comforts of home.



Included in every stay:

- A warm welcome
- Free hot breakfast
- Clean & fresh Hampton Bed®
- Free high-speed internet access in every room
- Gym/fitness center use
- Pool use



I-90 exit 171A at highway 26N, to Kettering St, turn left (north). Hotel is behind and adjacent to Cracker Barrel.

2400 Fulton Street
Janesville, Wisconsin, 53546
1-608-754-4900
Janesville.hamptoninn.com

Mention this ad when you check in and be entered in a monthly drawing for discounts or a free room.
Must be staying at the hotel and mention the ad upon check in or when booking reservation.



Discover

Wisconsin's Great Outside

Janesville

Let the **Cobblestone Hotel & Suites** be your home away from home after a long day **exploring** hundreds of acres of **serene parkland** and miles of **quiet trails**.

888.693.8262 20 W. Milwaukee St. Janesville, WI 53548

StayCobblestone.com "Big City Quality, Small Town Values..."®



**COBBLESTONE
HOTEL & SUITES**

At the Cobblestone Hotel & Suites in Janesville, Wisconsin, we offer our guests the amenities and services they need:

- Suites Available
- On Site Fitness Center
- Wi-Fi
- Hot Breakfast
- Indoor Pool
- On Site Guest Laundry
- Pet Friendly
- And More!

Angus Steaks & Cold Beer

Over 20 Wines by the Glass • Angus Steaks • Fresh Seafood
Large Selection of Draft and Bottled Beer • And More!

Located inside of the Cobblestone Hotel & Suites
Make a reservation online at www.WissotaChophouse.com



coming in spring 2019



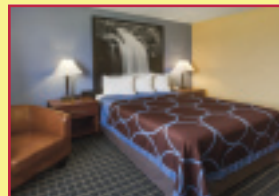
Fully equipped kitchen and Container Store® Closet in every suite
Free hot breakfast • In A Pinch® Market • On-Site Laundry
On-site fitness center • Business Center • Free Wireless Internet



TOWNEPLACE SUITES BY MARRIOTT® JANESVILLE
2706 Pontiac Place • Janesville, WI 53545
† 608.898.4200 • f 608.898.4201



- Free HOT Deluxe Breakfast
- Free Wi-Fi, Guest Laundry
- In Room Fridge, Microwave & Coffee Maker
- New 32" Flat Panel LCD TV's
- All HD Channels
- Group/Construction Rates Available
- Low Weekly & Monthly Rates Available



ADJACENT TO MANY RESTAURANTS, BARS & GRILLS

Scarlett House

VICTORIAN BED & BREAKFAST



Located in a beautiful Historic District in Janesville
JACUZZI SUITE • LOCAL PARK NEARBY • SPACIOUS

825 E Court St, Janesville, WI 53545
(608) 754-8000

Janesville



BY CHOICE HOTELS

- Free HOT Deluxe Breakfast (Scrambled Eggs, Sausage, Belgian Waffle)
- Free Wi-Fi, Guest Laundry
- In Room Fridge, Microwave & Coffee Maker
- New 32" Flat Panel LCD TVs
- All HD Channels including 7 HBOs
- Group/Construction Rates Available
- Low Weekly & Monthly Rates Available

Conveniently located just off Interstates 90 and 39, this hotel provides easy access to a number of local points of interest



608-754-0251

www.qualityinn.com

3520 Milton Ave. Janesville, WI 53545
I-90 Exit 171 A

Adjacent to many restaurants/bars & grills

Get IN Quicker

Free online urgent care
and ER scheduling

GO TO MercyInQuicker.org

Reserve your spot at one of Mercyhealth's urgent cares or emergency departments in Janesville:

- Fill out the online visit form.
- Wait from the comfort of home.
- Arrive at your projected treatment time.

EMERGENCY CARE

Mercyhealth Hospital and Trauma Center
1000 Mineral Point Ave.

Mercyhealth Hospital and Trauma Center Emergency North
3400 Deerfield Dr.

URGENT CARE

Mercyhealth East
3524 E. Milwaukee St.

Mercyhealth Hospital and Trauma Center Emergency North
3400 Deerfield Dr.

Mercyhealth Mall
1010 N. Washington St.



POWERED BY InQuicker.com

Join the Action and Get Ready for Take Off!

SEASON: SEPTEMBER - APRIL
FRIDAY & SATURDAY NIGHTS



The Janesville Jets is a community-oriented North American Hockey League team that provides sports fans and families fast-paced and affordable entertainment while helping talented hockey players develop into admirable young men enter the ranks of college and professional hockey.

JANESVILLE ICE ARENA

821 Beloit Ave. • Janesville, WI 53545

608.752.5387

www.janesvillejets.com





WELCOME *to* DELICIOUS



JANESVILLE LOCATIONS

2421 W Court St
(608) 756-2611

2633 Milton Ave
(608) 758-8916

645 Midland Rd
(608) 554-3712

NEWVILLE LOCATION

571 E Richardson Springs Rd
(608) 884-1800



History

Historic Districts, Architecture & Tours

For a lesson in history and architecture, all you have to do is walk down our city streets. Janesville features thirteen historic districts that make perfect walking tours.

Historic Districts *

The twin towers of St. Mary's Catholic Church mark the location of the **Prospect Hill Historic District**. In the first decades of the city's growth, the steep hills on the east side of the Rock River restricted road building and house construction. Consequently, like Courthouse Hill to the south, this area enjoyed its greatest period of development at the turn of the century as the streets of central Janesville neared completion.

Rising above the city on a bluff along the Rock River, **Courthouse Hill** is Janesville's premier historic residential neighborhood. The architecture reflects the pride and wealth of early Janesville's most prominent citizens, with outstanding examples of the architectural styles associated with the city's growth and development from settlement through 1940.

Extending along the east bank of the Rock River, the **South Main Street Historic District** retains much of its mid-to-late-

nineteenth-century character. Locally quarried or manufactured building materials are evident in the brick, cast iron, and stone trim of many early storefronts, particularly at the upper stories.

The **Look West Historic District** is part of Janesville's old First Ward, an early neighborhood with connections to the city's rail and manufacturing interests. The great variety of architecture attests to the diversity of its nineteenth-century population.

A rich display of the ideas of late 19th century masons and carpenters is found in the **West Milwaukee Street District**. Cream-colored brick and stone-trimmed windows and parapets are distinctive features of many commercial buildings along this street.

One of the oldest residential areas, the **Old Fourth Ward Historic District** includes the early settlements of Rockport and Monterey as well as an area of high styled houses and churches downtown.

The **Columbus Circle Historic District** is a residential enclave arranged around the

oval of Columbus Circle and three small park triangles. Developed in 1916 by the Parker Pen Company of Janesville as the Parkwood Addition, it is one of the city's distinctive exceptions to the grid plan street layouts. The small parks are neighborhood centerpieces, and houses include a variety of architectural styles popular in Janesville in the early 20th century.

Tours *

Take a self guided tour using the Clio app or join the **Rock County Historical Society** and a local historian for the Janesville Historic Walking Tours. Each tour is designed to showcase the unique personality and stories from Janesville's distinct neighborhoods and downtown. Enjoy a 60-minute guided tour, learning about the people, places and heritage of each neighborhood. Tours will be held in different neighborhoods each month from May through September. Visit janesvillecvb.com for more information.




Hacienda Real
Mexican Cuisine

FESTIVE EATERY SERVING AUTHENTIC MEXICAN CUISINE & FLAVORED MARGARITAS AMID COLORFUL HAND-PAINTED DECOR


Monday - Thursday 11:00 AM - 9:30 PM
Friday - Saturday 11:00 AM - 10:00 PM
Sunday 11:00 AM - 9:00 PM

608.754.8835

3001 N Lexington Dr. Janesville, WI 53545
www.haciendarealrestaurant.com



20-time National Champion Rock Aqua Jays
SUNDAYS & WEDNESDAYS
Memorial Day Through Labor Day
Go to www.rockaquajays.com for showtimes



PERFORMING AT THE BEAUTIFUL TRAXLER PARK STADIUM
Location of the International Water Ski Show Tournament

Enjoy pyramids, ballet, jumping and barefoot water skiing.
The show features performers of all ages and skill levels.

ADMISSION IS FREE AND CONCESSIONS ARE AVAILABLE

FOLLOW US ON



Shows are dependent upon water and weather conditions.

Grilled to Perfection
PRIME QUARTER STEAK HOUSE
"Grill Your Own" Tonight



THE Prime Quarter STEAK HOUSE

2017 READERS' CHOICE AWARDS
1st Runner Up

...mmm....Steak!

1900 Humes Road
Janesville, WI 53545
608-752-1881
primequarter.com

Monday-Friday Dinner from 5 pm-10 pm.
Lounge opens at 4 pm
Saturday Dinner from 4 pm-10 pm.
Lounge opens at 3:30 pm
Sunday Dinner from 4 pm-9 pm.
Lounge opens at 3:30 pm

CITY OF JANEVILLE
Wisconsin's Park Place

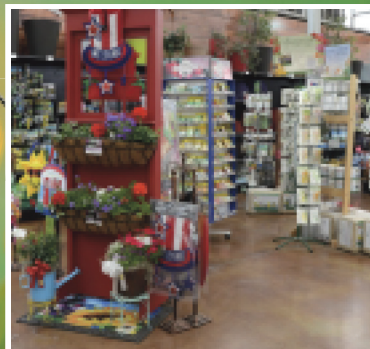


www.ci.janesville.wi.us
(608) 755-3000

It's Only Natural

BRINGING THE GARDENERS THE
VERY BEST & BRIGHTEST!



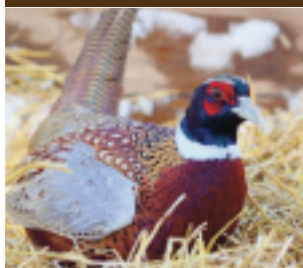
608.752.8917

www.kwgreenry.com

1328 Hwy East, Janesville, WI



MacFarlane Pheasants, Inc.
AMERICAS LARGEST PHEASANT FARM



OUR GIFT SHOP FEATURES:

Pheasants • Quail • Duck
Alligator Filets • Bison Sausage
Buffalo Filets • Pheasant Brats • Rabbit
Elk Steaks • Venison Steaks • Wild Rice
Wisconsin Wilderness Products

ALSO OFFERING:

Gift Items • Corinthian Bells Windchimes
Jelly & Salsa • Clothing
Silver Forest Jewelry

Monday-Friday7:30am - 4:30pm
Saturday9:00am - 1:00pm

Call 800-345-8348 to set up your
personal tour. Tours are offered
Monday-Friday. For bus tour
information call 800-487-2757

CONVENIENTLY LOCATED OFF
INTERSTATE I-90, EXIT 177
2821 S. US Highway 51
Janesville, Wisconsin 53546

800-345-8348

www.pheasant.com • www.pheasantfordinner.com



From
**Fun Up to
Fun Down!**
GET OUT AND CAMP
THIS SUMMER!

Our beautiful Milton-area campgrounds will surely
be a hit with your friends and family this summer!
Whether you are looking to stay in a fully furnished
cabin or cottage, in the comfort of your own RV, or a
rustic tent site under the stars, Blackhawk & Lakeland
RV Campgrounds have it all!

Book your Tent site, RV site, or Cabin TODAY!

(855) 251-9994 • RVontheGo.com



PETTIT'S **COUNTRYVIEW** **FUN • FOOD • DRINKS**

The Countryview Bar, is the newest addition to the popular Lakeview Campground. Great place to watch sports. Volleyball courts and a banquet facilities available. Have your party or fundraiser here!

JOIN US FOR

Fish Fry specials on Friday and Steak specials on Saturday.

LIVE MUSIC EVERY WEEKEND

COME SEE US!

WE ARE OPEN TUESDAY - SUNDAY

TUESDAY- THURSDAY OPEN AT 3:00 PM

FRIDAY AT 11:00 AM

SATURDAY – SUNDAY AT 10:00 AM

1801 E State Rd 59 • Milton, WI 53563

608-436-0201

www.countryviewbar.com



Campground & Bar and Grill

www.lakeviewcampgroundandbar.com

*Visit Us On
Beautiful
Lake Koshkonong!*



Located 90 miles north of Chicago, with 850 ft of lake frontage on beautiful Lake Koshkonong, Wisconsin's second largest lake with spectacular views of the beach and the lake.

Lakeview's Bar and Grill is a favorite place for great drinks, music, and the perfect place to relax, unwind.

LIVE MUSIC AND DJS EVERY WEEKEND

1901 E State Road 59 • Milton, WI 53563

(608) 868-7800

OPEN FOR BREAKFAST SATURDAY & SUNDAY



Experience History **at the Milton House**

Wisconsin's Last Authenticated Underground Railroad Station Open for Tours

Memorial Day - Labor Day: Open Daily 10 am - 4 pm
Tours available by appointment year-round

[f MiltonHouseMuseum](https://www.facebook.com/MiltonHouseMuseum)

www.miltonhouse.org

[miltonhousemuseum](https://www.instagram.com/miltonhousemuseum)



Located at the intersection of Janesville St. and Hwy 59 • Milton WI • 608-868-7772

Come join us - it's a party every day!



*Wine Tastings • Pairings
Fun Events • Tours
More!*

232 South Janesville St. Milton WI 53563
608-580-0575 • northleafwinery.com • [f](#)

Locations

INFORMATION, ACCOMMODATIONS, ATTRACTIONS, MEDICAL AND RECREATION

INFORMATION

- 1 Janesville Area Convention & Visitors Bureau**
20 S Main St, Suite #11
(608) 757-3171 or (800) 487-2757
- 13 Seasonal Visitor Information Center**
Palmer Park – East Pavilion
(608) 757-3171 or (800) 487-2757
- 47 Rock County Courthouse**
51 S Main St
(608) 757-5660
- 48 Hedberg Public Library**
316 S Main St
(608) 758-6600
- 49 Janesville City Hall/Municipal Building**
18 N Jackson St
(608) 755-3000
- 50 Forward Janesville**
14 S Jackson St, Ste # 200
(608) 757-3160
- 51 Janesville Transfer Center**
Corner of River & Court Streets
(608) 755-3150
- 52 Van Galder Bus Terminal**
3120 N Pontiac Dr
(608) 758-0909

ACCOMMODATIONS

- 2 Baymont Inn**
616 Midland Rd
(608) 758-4545 or (800) 337-0550
- 53 Cobblestone Hotel & Suites**
20 W Milwaukee St
(888) 693-8262
- 3 Quality Inn**
3520 Milton Ave
(608) 754-0251 or (800) 424-6423
- 4 Guardian Angel Bed & Breakfast**
429 Prospect Ave
(608) 758-3211 or (800) 424-6423
- 5 Hampton Inn**
2400 Fulton St
(608) 754-4900 or (800) 426-7866
- 6 Holiday Inn Express – Janesville Conference Center**
3100 Wellington Pl
(608) 756-3100 or (800) 315-2621
- 7 Microtel Inn**
3121 Wellington Pl
(608) 752-3121 or (888) 771-7171
- 8 Motel 6**
3907 Milton Ave
(608) 756-1742 or (800) 466-8356
- 9 Northern Town Motel**
1409 Center Ave
(608) 754-0248
- 10 AmericInn**
3900 Milton Ave
(608) 756-4511 or (800) 634-3444
- 11 Scarlett House Bed & Breakfast**
825 E Court St
(608) 754-8000
- 12 Super 8**
3430 Milton Ave
(608) 756-2040 or (800) 800-8000

- 54 TownePlace Suites by Marriott**
2706 Pontiac Place
(608) 898-4200 or 888-236-2427

ATTRACTIONS

- 13 CAMDEN Playground**
2501 Palmer Dr
(608) 755-3025
- 14 Gray Brewing Company**
2424 W Court St
(608) 754-5150
- 15 Janesville Mall**
2500 Milton Ave
(608) 752-7845
- 16 Janesville Performing Arts Center**
408 S Main St
(608) 758-0297
- 17 Rock County Historical Society**
426 N Jackson St
(608) 756-4509
- 17 Lincoln-Tallman House**
440 N Jackson St
(608) 756-4509
- 17 Helen Jeffris Wood Museum Center**
426 N Jackson St
(608) 756-4509
- 18 MacFarlane Pheasants, Inc.**
2821 S US Hwy 51
(608) 757-7881 or (800) 345-8348
- 19 Pontiac Convention Center**
2809 N Pontiac Dr
(608) 531-0284
- 20 Pine Tree Plaza**
2900 Deerfield Dr
- 21 Rock Aqua Jays Water Ski Show**
Traxler Park, 600 N Main St
rockaquajays.com
- 54 Rock County Brewing Company**
10 N Parker Dr Suite 160
(608) 531-8120
- 22 Rock County Fairgrounds**
1301 Craig Ave
(608) 755-1470
- 23 Rotary Botanical Gardens**
1455 Palmer Dr
(608) 752-3885
- 46 Skelly's Farm Market**
2713 Hayner Rd
(608) 757-1200
- 24 The Armory**
10 S High St
(608) 741-7400
- 25 Wisconsin Wagon**
507 Laurel Ave
(608) 754-0026

SCHOOLS

- 26 Blackhawk Technical College**
6004 S County Road G/Prairie Rd
(608) 758-6900
- 27 Craig High School**
401 S Randall Ave
(608) 743-5200

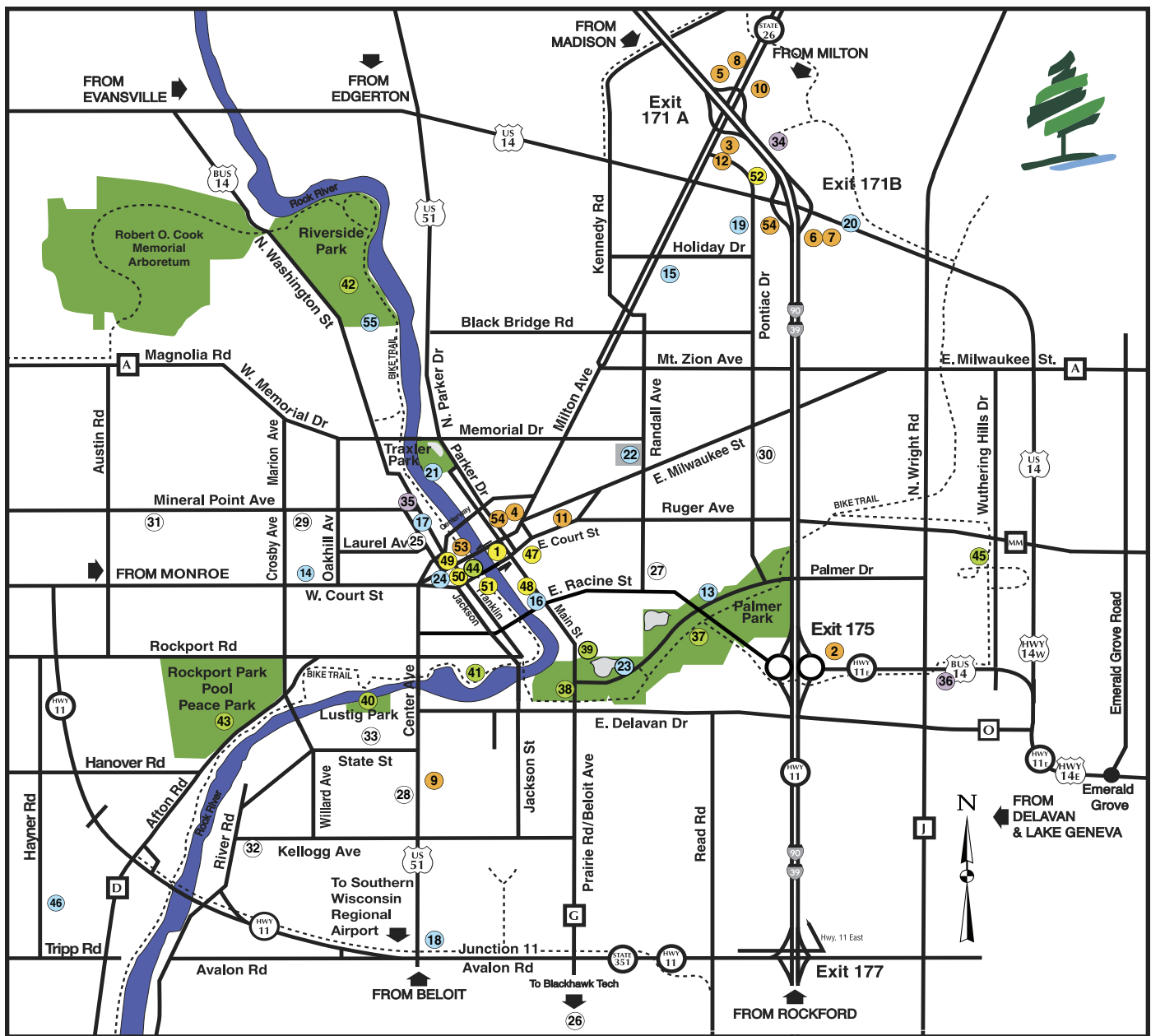
- 28 Edison Middle School**
1649 S Chatham St
(608) 743-5900
- 29 Franklin Middle School**
450 N Crosby Ave
(608) 743-6000
- 30 Marshall Middle School**
25 S Pontiac Dr
(608) 743-6200
- 31 Parker High School**
3125 Mineral Point Ave
(608) 743-5600
- 32 University of Wisconsin-Whitewater at Rock County**
2909 Kellogg Ave
(608) 758-6565
- 33 WI Center for the Blind & Visually Impaired**
1700 W State St
(608) 758-6100

HOSPITALS

- 34 Mercyhealth Hospital & Trauma Center North**
3400 Deerfield Dr
(608) 314-3600
- 35 Mercyhealth Hospital & Trauma Center**
1000 Mineral Point Ave
(608) 756-6000
- 36 SSM Health St. Mary's Hospital Janesville**
3400 E Racine St
(608) 373-8000

RECREATION

- 37 Blackhawk Golf Course**
2100 Palmer Dr
(608) 757-3090
- 38 Dawson Softball Complex**
920 Beloit Ave
(608) 755-3030
- 39 Janesville Ice Arena**
821 Beloit Ave
(608) 755-3015
- 40 Lustig Park – Disc Golf Course**
1500 River View Dr
(608) 755-3025
- 41 Monterey Park – Stadium**
465 Rockport Rd
(608) 743-5008 or (608) 743-5010
- 42 Riverside Golf Course**
2100 Golf Course Rd
(608) 757-3080
- 43 Rockport Park – Peace Park**
2801 Rockport Rd
(608) 755-3025
- 44 YMCA**
221 Dodge St
(608) 754-9622
- 45 Youth Sports Complex**
100 S Wuthering Hills Drive
(608) 755-3030
- 13 Palmer Park**
2501 Palmer Dr
(608) 755-3025
- 55 Riverside Park - Disc Golf Course**
2600 Parkside Dr
(608) 755-3025



Transportation

PLANES, BUSES AND AUTOMOBILES

Car Rental:

Enterprise Rent-A-Car
(608) 758-7100

Bus/Charter:

Van Galder Bus Company
(800) 747-0994
vangalderbus.com

City Transit System:

JTS (Janesville Transit System)
(608) 755-3150
Transit Transfer Center
Corner of River and Court Streets
ci.janesville.wi.us/jts

Taxi Cabs:

Park City Taxi
(608) 436-1617

Area Airports:

Southern Wisconsin Regional Airport
1716 W Airport Rd
Private Charter/Freight Cargo
(608) 757-5768
jvlairport.com

Dane County Regional Airport
Madison, 40 miles north
(608) 246-3380
msnairport.com

Chicago, Rockford International Airport
Rockford, 30 miles south
(815) 969-4000
flyrfd.com

General Mitchell International Airport
Milwaukee, 75 miles east
(414) 747-5300
mitchellairport.com

Chicago O'Hare International Airport
Chicago, IL, 90 miles southeast
(800) 832-6352
flychicago.com

Chicago Midway International Airport
Chicago, IL, 120 miles southeast
(800) 832-6352
flychicago.com

20 Acres of Botanical Splendor



Tours, Classes & Workshops,
Events, Garden Weddings,
Meeting & Event Space

1455 Palmer Dr., Janesville, WI • rotarybotanicalgardens.org • 608.752.3885

ROTARY BOTANICAL GARDENS

Holiday Light Show

A magical family-friendly experience
with over 500,000 twinkling lights!

Held multiple
evenings in November
and December



1455 Palmer Drive
Janesville, WI 53545
rotarybotanicalgardens.org

