

## Wisconsin's Great Outside

Janesville is home to an abundance of year-round outdoor activities, attractions, recreation and public art. No matter where you are in Janesville you're never very far from outdoor fun!



CAMDEN Park

### PARKS

Take advantage of Janesville's 60+ parks, including the Robert O. Cook Memorial Arboretum, 30 miles of paved trails that run throughout the city, and a Youth Sports Complex with baseball, softball, football and soccer fields. Cool off at Lions Beach, the Rockport Pool, Palmer Park's wading pool or the splash pad at Riverside Park. Check out Bond Park's skate park, or throw a disc at Lustig Park's disc golf course. Riverside Park also has 18 holes of disc golf, as well as tennis, shuffleboard, and pickleball courts. In the winter, explore ten miles of cross-country ski trails and sledding in six city parks. Picnic groves, pavilions and restrooms are located in the larger parks, and pets are welcome in all parks and trails from September 16 through May 14, with specific areas open to pets year round. Scan the QR code for more complete information on Janesville Parks.



### ACCESSIBLE PLAYGROUNDS

Palmer Park offers an accessible playground (CAMDEN). Rockport Park also has a large accessible playground with a theme of Peace.

## Fitness & Fun

### OUTDOOR FITNESS COURT

Located at 111 S River St in downtown Janesville, the Court has 30 individual pieces of equipment, a shock-resistant sports flooring, and exercise stations that allow up to 28 people to use the Court at the same time.



©Dave Sheen

### PICKLEBALL AT RIVERSIDE PARK

The Jim Clark Memorial Pickleball Courts at Riverside Park offer six dedicated pickleball courts. The Janesville Pickleball Club hosts weekly activities, including free lessons. Equipment is also available to rent from the city's Parks & Recreation divisions.

### SHUFFLEBOARD AT RIVERSIDE PARK

Stop by on select summer days and join the local shuffleboard players on six full-size courts. Equipment is provided, and a shuffleboard facilitator will be on hand to explain the game. The Parks & Recreation Division also has equipment available to rent.

### STRETCH OUT THE STRESS FITNESS STATIONS IN PALMER PARK

This series of stretching and exercise stations runs along the paved trail adjacent to Mohawk Road, from Lexington Drive to Palmer Drive.

### GEOCACHING

With 200 caches hidden within a five-mile radius and 500 within a 15-mile radius, Janesville is a treasure trove for the GPS-wielding geocachers. Visit [www.geocaching.com/play](http://www.geocaching.com/play), enter your coordinates, and choose a cache. Use the GPS to navigate to the location, then search for the secret container.

### ROCK AQUA JAYS WATER SKI SHOW

Experience the most successful water ski show team in the world with more than 60 total tournament victories, including 21 U.S. National Championships. The team performs free water ski shows on Sunday and Wednesday evenings from Memorial Day weekend through Labor Day at Janesville's Traxler Park.



Rock Aqua Jays ©Kim Hoholek

### HISTORIC SELF-GUIDED TOURS

The Rock County Historical Society has programmed historic sites onto the Clio app, allowing you to walk, bike or drive around Janesville and discover history for yourself. Right now there are more than 80 historical sites on the app within 5 miles of downtown Janesville. Download the app for Android or iOS.



Courthouse Park

### FISHING & BOATING

The Janesville area has some great fishing and boating options, whether you prefer the Rock River, smaller ponds, Gibbs Lake, or Lake Koshkonong, one of the larger lakes in Wisconsin. A fishing license is required. Scan the QR code for a list of fishing locations throughout Rock County.



Pike Pole Guided Fishing



Do you love spending time outside? Visit Janesville for year-round outdoor activities.

Cover photo courtesy of Cheryl Eugenio.

## JANESVILLE AREA Convention & Visitors Bureau

20 S Main St, Ste 11, Janesville  
[janesvillecvb.com](http://janesvillecvb.com) • (608) 757-3171

Follow the Janesville Area Convention & Visitors Bureau on Facebook at [@janesvillecvb](https://www.facebook.com/janesvillecvb) and Instagram at [explorejanesvillewi](https://www.instagram.com/explorejanesvillewi).

EXPLORE JANESVILLE, WISCONSIN'S

## Great Outside

OUTDOOR ATTRACTIONS, ACTIVITIES, TRAILS & MORE



JANESVILLECVB.COM

## Outdoor Attractions & Activities



Rotary Botanical Gardens ©Marsha Mood

### ROTARY BOTANICAL GARDENS

This award winning, 20-acre non-profit botanic garden is home to many dramatic and themed gardens. Some have an international focus, such as the Japanese and English Cottage gardens, while others are less formally-structured, such as the children's garden, Wellness Garden, Hosta Hollow, the fern and moss garden, and other seasonal displays. Much of the garden is wheelchair and stroller accessible, with wide, level paths and many benches to sit and take in the surrounding beauty. In December, the Gardens presents the spectacular Holiday Light Show.



Rotary Botanical Gardens Holiday Light Show ©Full Spectrum Photography

### BARN QUILTS OF ROCK COUNTY

Barn quilts are painted quilt blocks mounted on a barn or other building. Rock County is home to over 250 barn quilts scattered throughout the countryside. Scan the QR to download a 2012 map of barn quilt locations throughout the county.



River of Life Mural ©Pat Sparling Photography

### PUBLIC ART TRAIL

Discover the vibrant beauty found year-round along Janesville's outdoor public art trail. It includes, 25+ large scale murals created by local, national and international artists.



Mural by Jeff Henriquez. Photo © Full Spectrum Photography

Many sculptures, from whimsical to incredible, can be found along the trail. Several were created by nationally renowned sculptor O.V. Shaffer. There's also a variety of interesting historical markers and memorials.



Blain Gilbertson Family Heritage Bridge, Janesville Town Square ©Full Spectrum Photography

Scan the QR code with your smartphone to find detailed listings of the art and a map of locations.



### SKELLY'S FARM MARKET

Three seasons of goodness run from strawberries to sweet corn to pumpkins. Activities are available, including a free playground for the kids and a fall corn maze. The farm also has a retail store, gift shop and bakery.



Skelly's Farm Market

### NATURE'S TOUCH GARDEN & ACTIVITY CENTER

Nature's Touch Activity Center offers two HUGE bounce pillows, the largest in Wisconsin, plus terrainable rides, pedal carts and tracks, obstacle courses, pan for gems, life-size chess, a sandbox, duck races, corn hole games, and more. Admission includes all activities. Also check out their Garden Center.



©Nature's Touch Activity Center

### BIKE, KAYAKS & OTHER RENTALS

Velocity Downtown Adventures & Rentals has e-bikes, fat tire, and e-scooters, as well as kayak and stand up paddleboards. They also offer guided bike tours. Drift Away Paddle Co and Paddle Time offer kayak rental as well as guided trips.



Gibbs Lake ©Full Spectrum Photography

### GOLF

In addition to two Janesville golf courses, you can enjoy a day on the greens at twelve Rock County golf courses. Scan the code for a list of courses.



©Full Spectrum Photography

### DISC GOLF

Disc golf is played like traditional golf but using a flying disc. Janesville is home to disc golf courses at both Riverside and Lustig parks.

### MINI GOLF

The lighted 18-hole miniature golf course at Tee Shack Mini Golf & Driving Range has the classic challenges, including corners, windmills, ramps, tunnels and colorful obstructions. Also enjoy a 300+ yard, 16-bay covered driving range and a grass range, concession stand, and shade pavilion.

### PAINTBALL

The Edge Paintball & Airsoft provides an exciting five recreational wooded fields and a tournament speedball field.



Ice Age Trail, Blain Gilbertson Family Heritage Bridge ©Full spectrum Photography

## JANESVILLE TRAIL SYSTEM

Janesville's 30 miles of trails, including a segment of the statewide **Ice Age National Scenic Trail**, connect many neighborhoods, parks and attractions. In the winter, the trails, parks and greenbelt system are available to cross country skiers and snowshoers. Pets are welcome on the trails from September 16 through May 14. Most of the trail in Janesville is paved, perfect for biking, walking, running and rollerblading.



Palmer Park ©Eric Panico

## BIKING

Take a leisurely family bike ride on the 30 miles of paved trails that connect several parks and the downtown, or explore miles of mountain biking trails winding through Rockport Park. Go the distance on country roads or follow the trail connecting neighboring communities. Check out downtown Janesville for options closer to the heart of Janesville. The City of Janesville has been granted a bronze-level Bicycle Friendly Community (BFC) award by the League of American Bicyclists.



Janesville Morning Rotary Pic Ride ©Full Spectrum Photography

## WALKING/HIKING

A few portions of the trail, notably the Devil's Staircase in Riverside Park and a segment that runs through the Robert O Cook Memorial Arboretum, are unpaved and suitable for hiking.



Devil's Staircase ©Chase Coleman

## CROSS COUNTRY SKIING & SNOWSHOEING

Rockport Park has over 6 miles of trails color coded for easy navigation. Although Rockport Park and Riverside Golf Course offer the only groomed trails, cross-country skiing and snowshoeing is allowed in any City park and greenbelt. Blackhawk Golf Course, Riverside Golf Course, Rockport Park, Robert O. Cook Memorial Arboretum and Sheffer Park are ideal locations for snowshoeing.



©Full Spectrum Photography

## BIRDING

With our variety of habitats many species of birds can be found throughout the year. Janesville achieved Bird City designation in 2013 from Bird City Wisconsin. Excellent locations for birding in Janesville include the Robert O. Cook Memorial Arboretum, Riverside Park, Rockport Park, Rotary Botanical Gardens, Monterey Park and Sheffer Park.



Rotary Botanical Gardens ©Marsha Mood

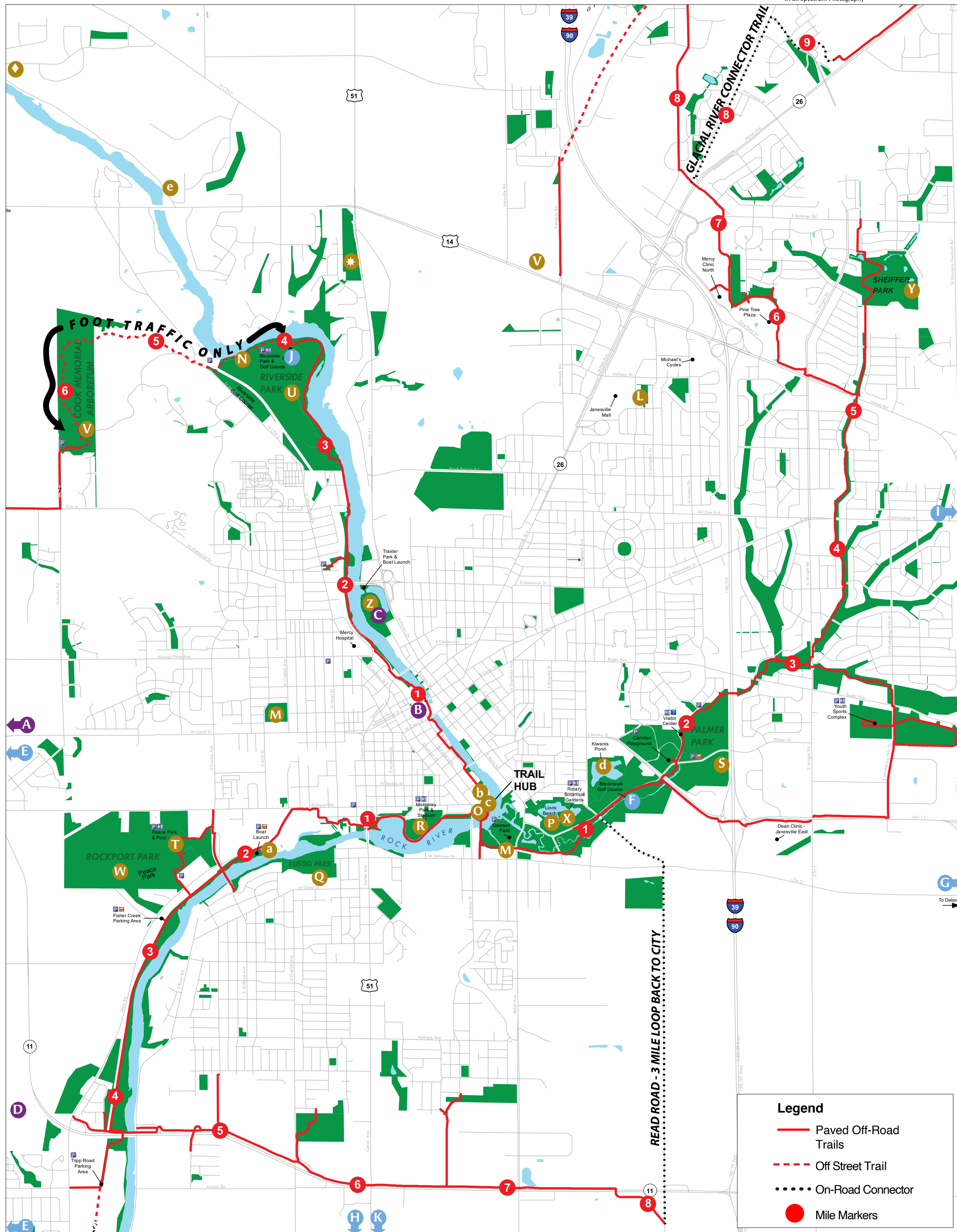
## SNOWMOBILING

Several snowmobile clubs from around Rock County work with area land owners to maintain the Rock County snowmobile trails. Scan the QR code to download a map of the Rock County Snowmobile Trails.



## SLEDDING

City parks with sledding hills include Ardon Park, Palmer Park, Riverside Park, Lustig Park, Rockport Park and Sheffer Park. Ardon Park is located across the street from the back of Uptown Janesville and substantial parking is available. Watch for Little Free Sled Sheds at some sledding hills. Provided by the City of Janesville's Parks & Recreation Divisions, these sheds allow you to borrow a sled while you're there.



### Legend

- Paved Off-Road Trails
- - - Off Street Trail
- . . . . . On-Road Connector
- Mile Markers

### Attractions

- A** Nature's Touch Activity Center, 5013 W State Rd 11
- B** Janesville Town Square & Festival Streets, 65 S River St
- C** Rock Aqua Jays Water Ski Show, 600 N Main St
- D** Skelly's Farm Market, 2713 S Hayner Rd

### Golf

- E** Bass Creek Golf Club, 1303 S Murphy Rd
- F** Blackhawk Golf Course, 2100 Palmer Dr
- G** Cecilia's Golf Course, 1901 S Emerald Grove Rd
- H** Glen Erin Golf Club, 1417 W Airport Rd
- I** Prairie Woods Golf Course, 12601 E County Rd A - Avalon - WI
- J** Riverside Golf Course, 2100 Golf Course Rd, 4337 S US Hwy 51
- K** Tee Shack Mini Golf & Driving Range, 4337 S US Hwy 51

### Trails, Parks & Playgrounds

Janesville parks are open from 5 AM to 11 PM, with restroom facilities available April 15 through October 15. Parks and trails are open to pets September 16 - May 14.

Scan the QR code with your smartphone for more information about Janesville trails.



- L** Ardon Park, 2201 Refset Dr
- M** Bond Park, 201 N Oakhill Ave
- N** Devil's Staircase, 2600 Parkside Dr (North end of Riverside Park)
- O** Ice Age Trail Hub, 200 Riverside Dr
- P** Lion's Beach, 1401 Palmer Dr
- Q** Lustig Park, 1500 River View Dr
- R** Monterey Park, 501 Rockport Rd
- S** Palmer Park & CAMDEN Playground, 2501 Palmer Dr
- T** Peace Park Playground, 2801 Rockport Rd
- U** Riverside Park, 2600 Parkside Dr
- V** Robert O Cook Memorial Arboretum, 3550 W Co Hwy A
- W** Rockport Park, 3550 W Co Hwy A
- X** Rotary Botanical Gardens, 1455 Palmer Dr
- Y** Sheffer Park, 3600 N Wright Rd
- Z** Traxler Park, 600 N Main St
- \*** Walt Lindemann Sportsman's Park, 3411 N US Hwy 51
- ◆** Rock River Heritage Park, 5801 N River Rd

### Canoes, Kayaks & Boat Access

- B** Traxler Park, 600 N Main St
- P** Lion's Beach, 1401 Palmer Dr
- U** Riverside Park, 2600 Parkside Dr
- R** Monterey Park, 501 Rockport Rd
- Z** Janesville Town Square & Festival Streets, 65 S River St
- a** Afton Road Launch, 901 Afton Rd
- b** 525 S River St
- c** 101 Rockport Rd
- d** Kiwanis Pond, S Randall Ave off Sharon Rd
- e** Janesville Town Launch, 4033 N River Rd